

## Postal Code 78610

## Residential Statistics



## December 2021

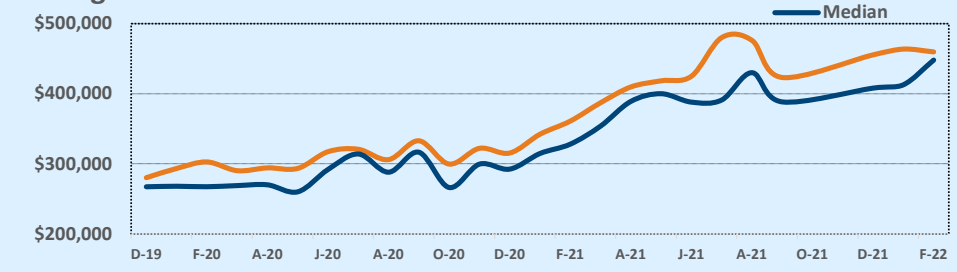
Listings	This Month			Year-to-Date		
	Dec 2021	Dec 2020	Change	2021	2020	Change
Single Family Sales	79	88	-10.2%	889	965	-7.9%
Condo/TH Sales	16	6	+166.7%	61	32	+90.6%
<b>Total Sales</b>	<b>95</b>	<b>94</b>	<b>+1.1%</b>	<b>950</b>	<b>997</b>	<b>-4.7%</b>
New Homes Only	7	3	+133.3%	31	87	-64.4%
Resale Only	88	91	-3.3%	919	910	+1.0%
Sales Volume	\$43,269,678	\$29,643,982	+46.0%	\$401,108,459	\$308,182,936	+30.2%
New Listings	55	79	-30.4%	1,062	1,020	+4.1%
Pending	--	--	--	--	--	--
Withdrawn	4	3	+33.3%	11	26	-57.7%
Expired	4	3	+33.3%	11	26	-57.7%
Months of Inventory	0.3	0.4	+26.7%	N/A	N/A	--

Price Range	This Month			Year-to-Date		
	New	Sales	DOM	New	Sales	DOM
\$149,999 or under	--	--	--	2	1	1
\$150,000- \$199,999	--	--	--	8	3	41
\$200,000- \$249,999	--	--	--	15	24	15
\$250,000- \$299,999	3	1	--	98	90	11
\$300,000- \$349,999	7	9	44	209	141	10
\$350,000- \$399,999	9	36	19	259	252	12
\$400,000- \$449,999	9	15	15	168	156	14
\$450,000- \$499,999	4	15	8	115	104	16
\$500,000- \$549,999	6	6	29	57	70	11
\$550,000- \$599,999	6	4	15	58	45	14
\$600,000- \$699,999	3	5	14	32	38	16
\$700,000- \$799,999	4	--	--	15	5	15
\$800,000- \$899,999	3	1	52	8	7	34
\$900,000- \$999,999	--	1	5	6	5	6
\$1M - \$1.99M	1	2	96	8	8	30
\$2M - \$2.99M	--	--	--	2	--	--
\$3M+	--	--	--	2	1	41
<b>Totals</b>	<b>55</b>	<b>95</b>	<b>21</b>	<b>1,062</b>	<b>950</b>	<b>13</b>

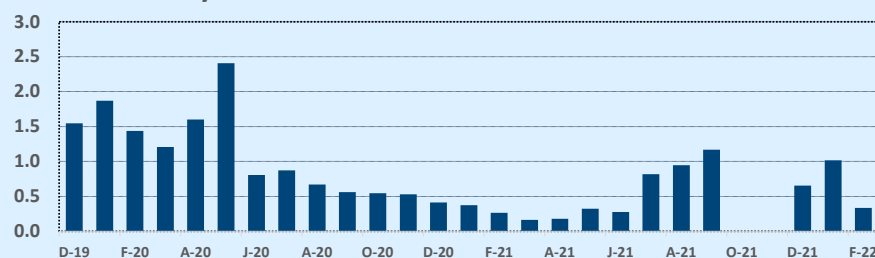
Average	This Month			Year-to-Date		
	Dec 2021	Dec 2020	Change	2021	2020	Change
List Price	\$449,633	\$312,067	+44.1%	\$399,729	\$310,736	+28.6%
List Price/SqFt	\$217	\$156	+39.1%	\$194	\$149	+29.9%
Sold Price	\$455,470	\$315,362	+44.4%	\$422,219	\$309,110	+36.6%
Sold Price/SqFt	\$221	\$158	+40.1%	\$205	\$149	+37.9%
Sold Price / Orig LP	102.1%	101.1%	+1.0%	106.0%	99.6%	+6.4%
Days on Market	21	14	+45.8%	13	37	-64.9%

Median	This Month			Year-to-Date		
	Dec 2021	Dec 2020	Change	2021	2020	Change
List Price	\$399,000	\$288,500	+38.3%	\$365,000	\$284,990	+28.1%
List Price/SqFt	\$207	\$151	+37.0%	\$187	\$145	+28.8%
Sold Price	\$408,000	\$292,400	+39.5%	\$389,915	\$284,280	+37.2%
Sold Price/SqFt	\$210	\$152	+38.2%	\$200	\$144	+38.8%
Sold Price / Orig LP	100.0%	100.0%	+0.0%	103.8%	100.0%	+3.8%
Days on Market	7	5	+40.0%	5	14	-64.3%

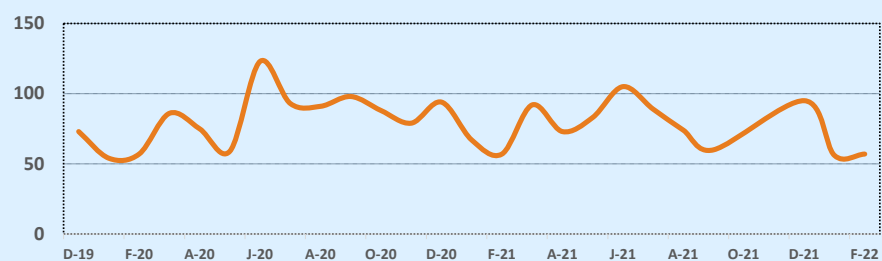
### Average & Median Sales Price - Last Two Years



### Months of Inventory - Last Two Years



### Number of Sales - Last Two Years



Based on information from the Austin Board of REALTORS® (alternatively, from ACTRIS). Neither the Board nor ACTRIS guarantees or is in any way responsible for its accuracy. The Austin Board of REALTORS®, ACTRIS and their affiliates provide the MLS and all content therein "AS IS" and without any warranty, express or implied. Data maintained by the Board or ACTRIS may not reflect all real estate activity in the market.